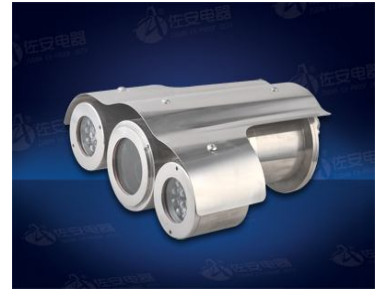
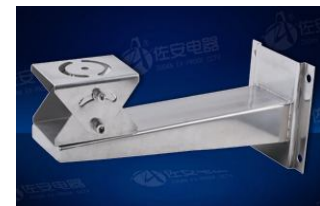
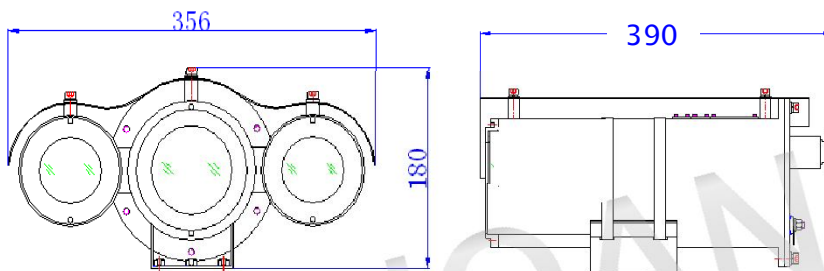


2014-2-28

ZAF1032
LONG NIGHT VISION EXPLOSION-PROOF CORROSION PROOF CAMERA HOUSING WITH LIGHT
MAIN FEATURES

- stainless steel 304 or 316L
- optional electropolished or corrosion resistant paint finish
- Enclosure Protection: IP68
- Exd II CT6 & DIP A20, TA, T6
- Applicable for the circumstances of explosive gas, oil, powder,
- Fit for gas zone 1, zone 2, dust zone 21, 22
- Optional power input: DC12V, AC24V, AC100~240V
- Working Current: ≤1000mA
- Optional lower temperature range: -50 to 65 °C
- With lights for night vision: 0-20m, 20-60m, 60-100m distance


DRAWINGS


ZAZ100B WALL BRACKET



FLEXIBLE TUBE

Model	ZAF1032-S-LA	ZAF1032-SS-LA2
Atmospheric pressure	80KPa~110Kpa	
Ambient Temperature	-20°C~+60°C	
Relative Humidity	≤95% (+25°C)	
Ex-proof mark	Ex d II CT6 & DIP A20, TA, T6	
Explosion proof Certified	CNEx 11.0585	
Window glass	Strong tempered glass	
Ingress Protection	IP68	
Optional Voltage Input	AC24V, AC100~240V, DC12V	
Overall dimension	390*356*180mm	
Net weight	13.9kg	
Housing Material	Stainless Steel 304	Stainless Steel 316L
Auto-heating, cooling kit	-20 to +60°C	
	-50 to +65°C (lower temperature version)	
Night vision	0-20m, 20-60m, 60-100m distance	

specifications subject to change without notice. © ZUO AN all rights reserved.

 skype: cookee.lee
 tel +86-15295033359